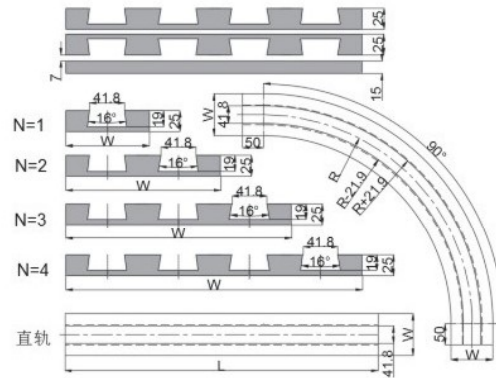
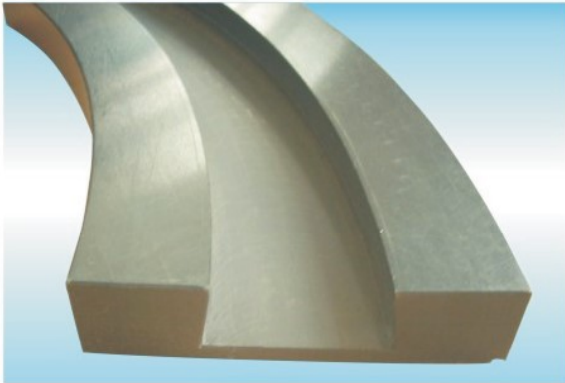
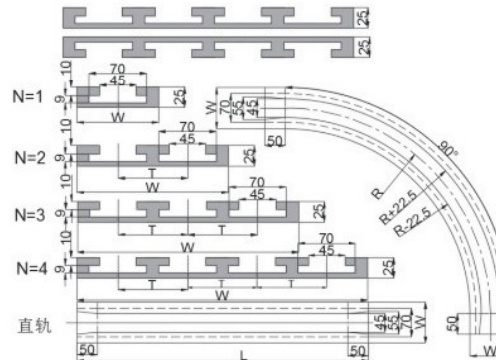
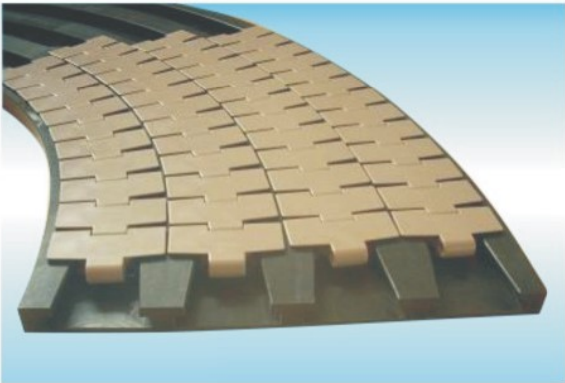


880燕尾型侧弯导轨 880 Corner tracks for bevel chains



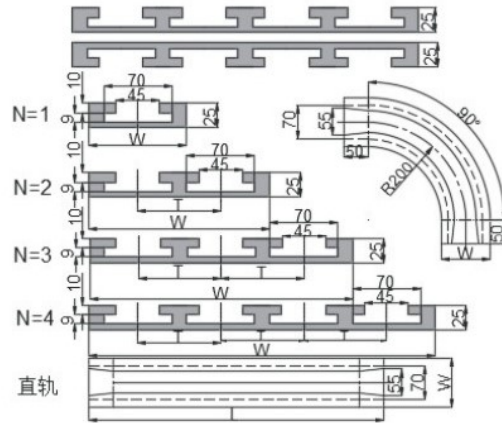
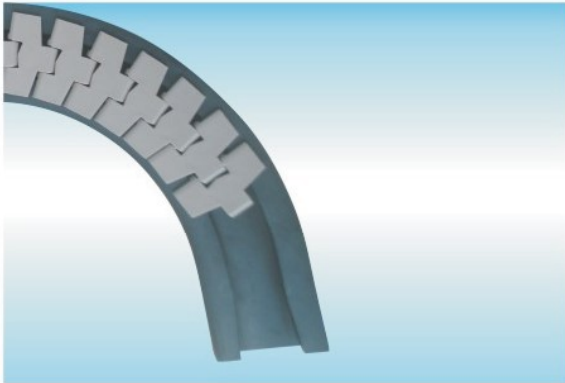
Code(直轨rail)	Code(弯轨Corner)	Rmin	R	W-1	W-2	W-3	W-N	a°	H	A	T
ZG-880K325-W-N-L	WG-880K325-R-W-N-a	500	500/610/650/1000	100	185	270	A+(N-1)*T	45/90/180	25	100	85
ZG-880K450-W-N-L	WG-880K450-R-W-N-a	610	500/610/650/1000	130	250	370	A+(N-1)*T	45/90/180	25	130	120

880TAB/881TAB/HF880TAB/LBP880侧弯导轨 880TAB/881TAB/HF880TAB/LBP880 Corner tracks for bevel chains



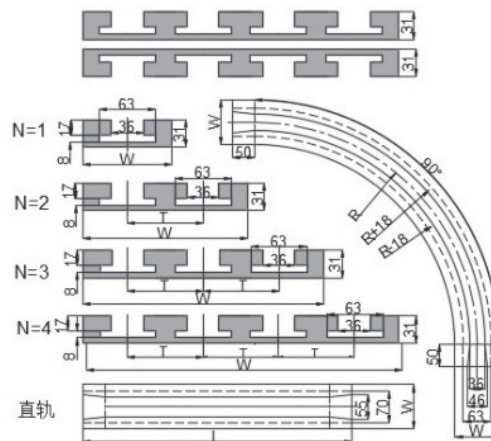
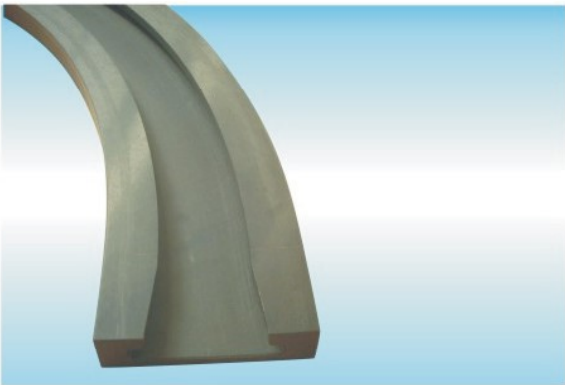
Code(直轨rail)	Code(弯轨Corner)	Rmin	R	W-1	W-2	W-3	W-N	a°	H	A	T
ZG-880TABK325-W-N-L	WG-880TABK325-R-W-N-a	500	500/610/650/1000	100	185	270	A+(N-1)*T	45/90/180	25	100	85
ZG-880TABK450-W-N-L	WG-880TABK450-R-W-N-a	500	500/610/650/1000	130	250	370	A+(N-1)*T	45/90/180	25	130	120
ZG-881TABK325-W-N-L	WG-881TABK325-R-W-N-a	500	500/610/650/1000	100	185	270	A+(N-1)*T	45/90/180	25	100	85
ZG-881TABK450-W-N-L	WG-881TABK450-R-W-N-a	500	500/610/650/1000	130	250	370	A+(N-1)*T	45/90/180	25	130	120
ZG-881TABK600-W-N-L	WG-881TABK600-R-W-N-a	610	610/650/1000	160	320	480	A+(N-1)*T	45/90/180	25	160	160
ZG-881TABK750-W-N-L	WG-881TABK750-R-W-N-a	610	610/650/1000	200	400	600	A+(N-1)*T	45/90/180	25	200	200
ZG-881TABK1000-W-N-L	WG-881TABK1000-R-W-N-a	610	610/650/1000	260	520	780	A+(N-1)*T	45/90/180	25	260	260
ZG-881TABK1200-W-N-L	WG-881TABK1200-R-W-N-a	610	610/650/1000	320	530	840	A+(N-1)*T	45/90/180	25	320	310

880TAB-RT 小半径弯链导轨 880TAB-RT Corner tracks for bevel chains



Code(直轨rail)	Code(弯轨Corner)	Rmin	W-1	W-2	W-3	W-N	a°	H
ZG-880TAB-RTK325-W-N-L	WG-880TAB-RTK325-R-W-N-a	200	100	185	270	100+(N-1)*85	45/90/180	25
ZG-880TAB-RTK450-W-N-L	WG-880TAB-RTK450-R-W-N-a	200	130	250	370	130+(N-1)*120	45/90/180	25

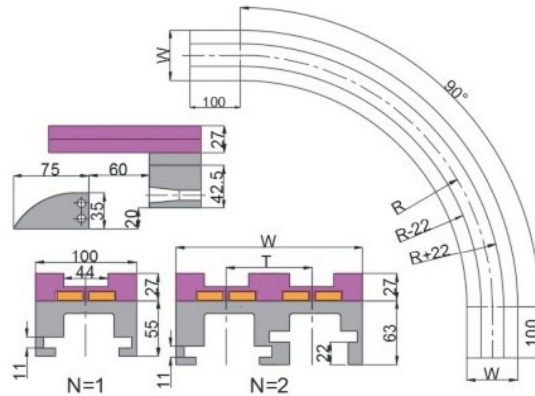
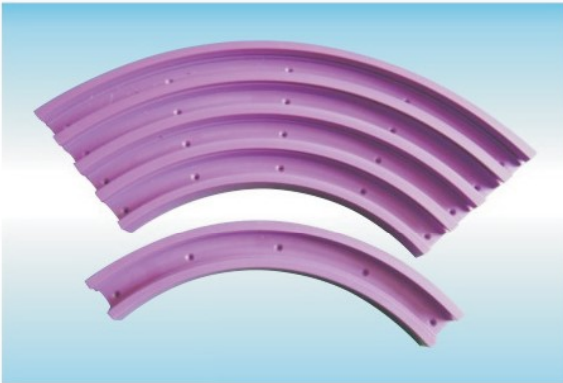
1873侧弯导轨 1873 Corner tracks for bevel chains



Code(直轨rail)	Code(弯轨Corner)	Rmin	R	W-1	W-2	W-3	W-N	a°	H
ZG-1873K325-W-N-L	WG-1873K325-R-W-N-a	400	400/500/610/650	100	185	270	100+(N-1)*85	45/90/180	32
ZG-1873K450-W-N-L	WG-1873K450-R-W-N-a	400	400/500/610/650	130	250	370	100+(N-1)*120	45/90/180	32
ZG-1873K600-W-N-L	WG-1873K600-R-W-N-a	500	500/610/650	160	320	480	160+(N-1)*160	45/90/180	32
ZG-1873K750-W-N-L	WG-1873K750-R-W-N-a	500	500/610/650	200	400	600	200+(N-1)*200	45/90/180	32
ZG-1873K1000-W-N-L	WG-1873K1000-R-W-N-a	610	610/650/1000	260	520	780	260+(N-1)*260	45/90/180	32
ZG-1873K1200-W-N-L	WG-1873K1200-R-W-N-a	610	610/650/1000	320	630	950	320+(N-1)*310	45/90/180	32

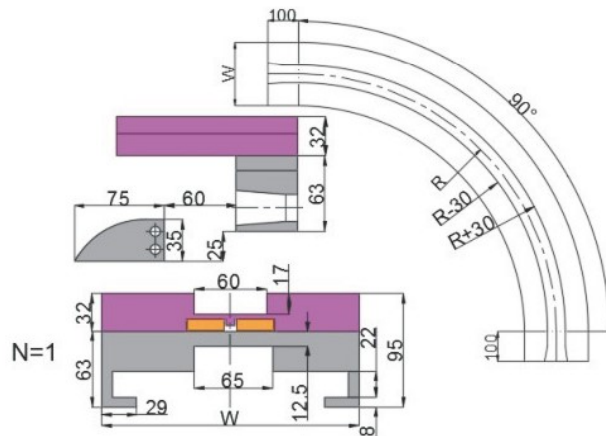
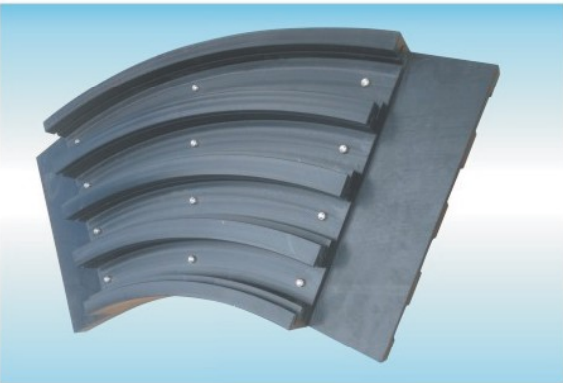
弯轨 Corner track

1050/1060 重型弯链导轨 1050/1060 Corner tracks for bevel chains



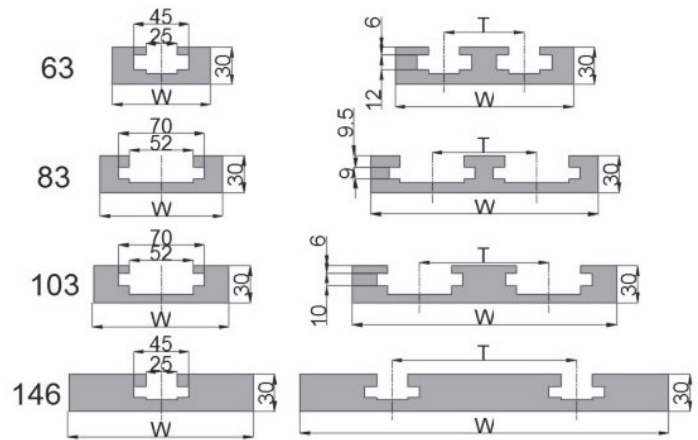
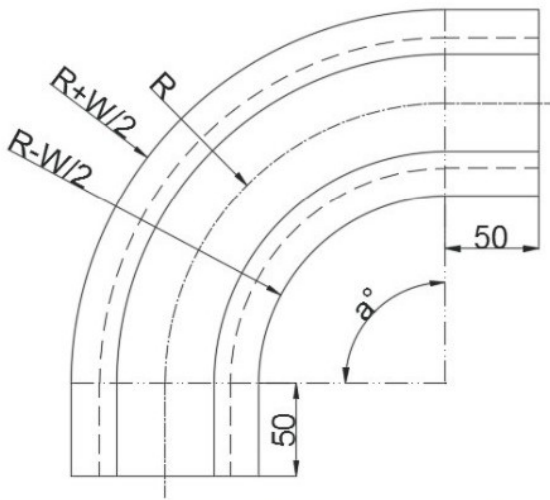
Code(直轨rail)	Code(弯轨Corner)	Rmin	W-1	W-2	W-3	W-N	a°	Hs	Hd
ZG-1050K330-W-N-L	WG-1050K330-R-W-N-a	500	100-H82	185	270	100+(N-1)*85	45/90/180	82	90

882M 磁性侧弯链导轨 882M Dual Magnetic Corner tracks for bevel chains



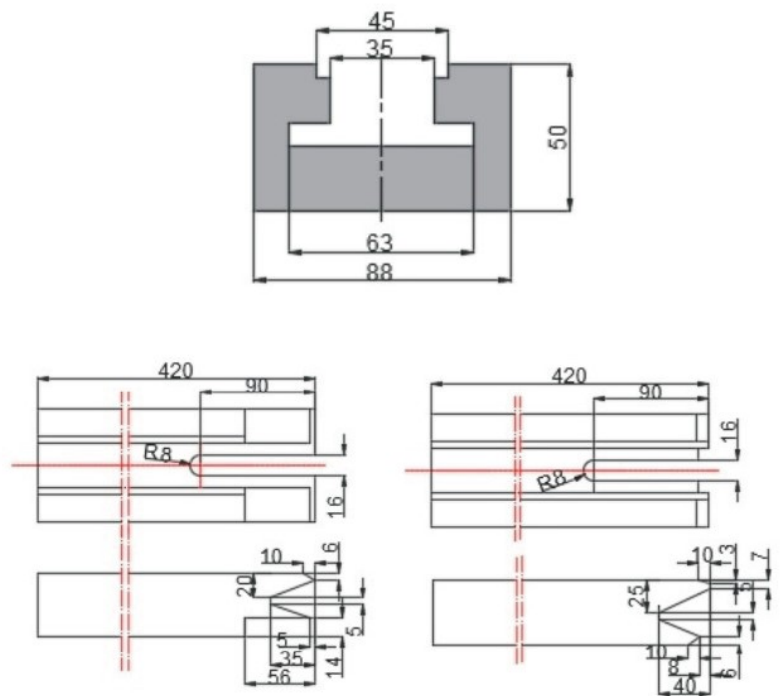
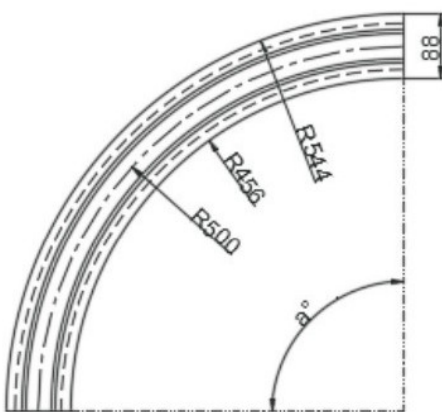
Code(直轨rail)	Code(弯轨Corner)	Rmin	R	W-1	W-2	W-3	W-N	a°	H	H
ZG-882MK750-W-N-L	WG-882MK750-R-W-N-a	860	860/1000	214	410	606	200+(N-1)*196	45/90/180	95	120
ZG-882MK1000-W-N-L	WG-882MK1000-R-W-N-a	860	860/1000	290	520	780	260+(N-1)*260	45/90/180	95	120
ZG-882MK1200-W-N-L	WG-882MK1200-R-W-N-a	860	860/1000	320	630	950	320+(N-1)*310	45/90/180	95	120

齿形链导轨 Corner tracks for flexs chains



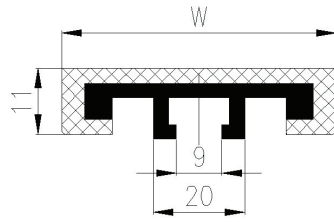
Code(直轨rail)	Code(弯轨Corner)	Rmin	R	W-1	W-2	W-3	W-N	a°	H
ZG-63-W-N-L	WG-63-R-W-N-a	150	150/300/500	80	145	210	180+(N-1)*65	15/45/90/180	30
ZG-83-W-N-L	WG-83-R-W-N-a	150	150/300/500	100	185	270	100+(N-1)*85	15/45/90/180	30
ZG-103-W-N-L	WG-103-R-W-N-a	250	250/500/750	100	215	320	110+(N-1)*105	15/45/90/180	30
ZG-146-W-N-L	WG-105-R-W-N-a	250	250/500/750	150	300	450	150+(N-1)*150	15/45/90/180	30

垂直链导轨 Corner tracks for vertical chains

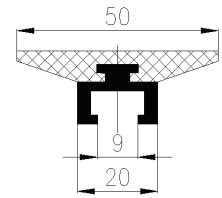


Code(直轨rail)	Rmin	Rmm	Lmm	W-(N-1)*T	a°	H
WG-1873-R-W-N-a	50	500/750/1000		88+(N-1)*85	15/45/90/180	50
ZG-1873-W-N-a			420	88+(N-1)*85		50
ZG-1873-W-N-a			420	88+(N-1)*85		50

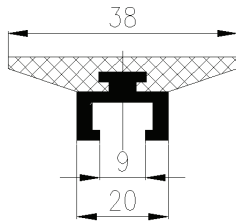
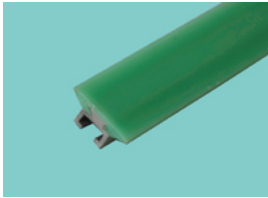
护栏 Side Guides



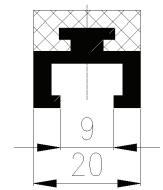
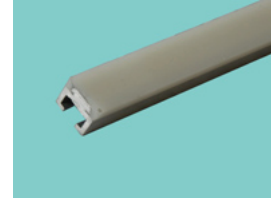
Code	Mat.	Color	W	Length
ZY-SG-001A	UHMW-PE+AL	WHITE/GREEN	60	3mtr
ZY-SG-001B	UHMW-PE+AL	WHITE/GREEN	80	3mtr
ZY-SG-001C	UHMW-PE+AL	WHITE/GREEN	100	3mtr



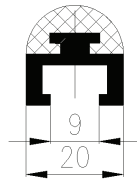
Code	Mat.	Color	Length
ZY-SG-002	UHMW-PE+AL	WHITE	3mtr



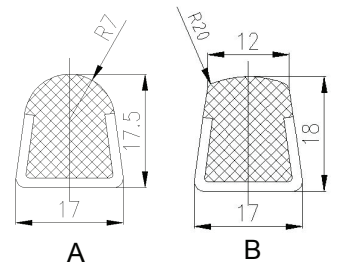
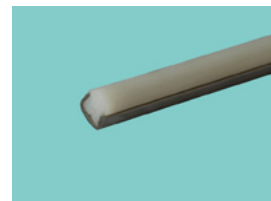
Code	Mat.	Color	Length
ZY-SG-003	UHMW-PE+AL	WHITE	3mtr



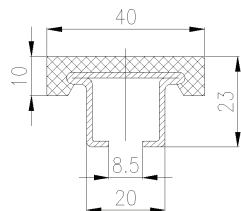
Code	Mat.	Color	Length
ZY-SG-004	UHMW-PE+AL	WHITE	3mtr



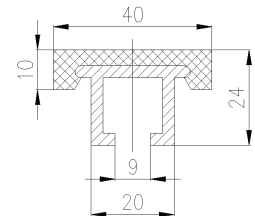
Code	Mat.	Color	Length
ZY-SG-005	UHMW-PE+AL	WHITE/GREEN	3mtr



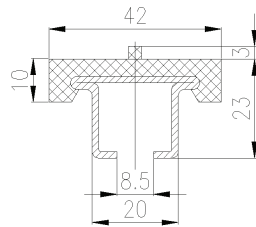
Code	Mat.	Color	Length
ZY-SG-006A	UHMW-PE+SS	WHITE	3mtr
ZY-SG-006B	UHMW-PE+SS	WHITE	3mtr



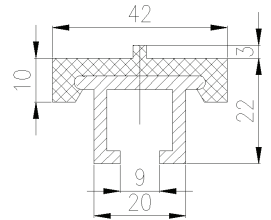
Code	Mat.	Color	Length
ZY-SG-007A	UHMW-PE+SS	WHITE/GREEN	3mtr



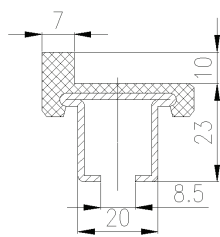
Code	Mat.	Color	Length
ZY-SG-007B	UHMW-PE+AL	WHITE/GREEN	3mtr



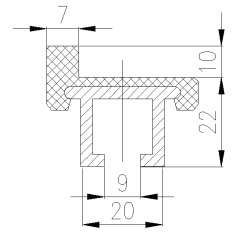
Code	Mat.	Color	Length
ZY-SG-008A	UHMW-PE+SS	WHITE/GREEN	3mtr



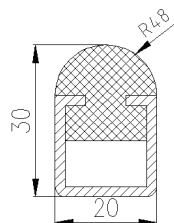
Code	Mat.	Color	Length
ZY-SG-008B	UHMW-PE+AL	WHITE/GREEN	3mtr



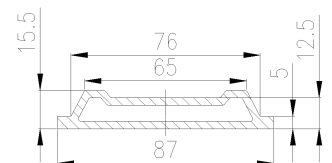
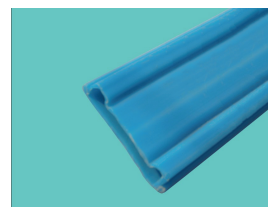
Code	Mat.	Color	Length
ZY-SG-009A	UHMW-PE+SS	WHITE/GREEN	3mtr



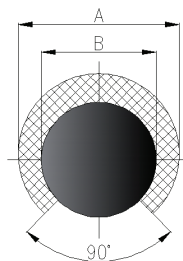
Code	Mat.	Color	Length
ZY-SG-009B	UHMW-PE+AL	WHITE/GREEN	3mtr



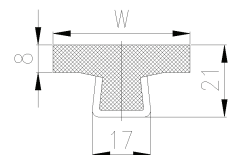
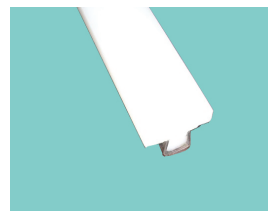
Code	Mat.	Color	Length
ZY-SG-018	UHMW-PE+SS	WHITE/GREEN	3mtr



Code	Mat.	Color	Length
ZY-SG-019	PA	BLUE/BLACK	3mtr

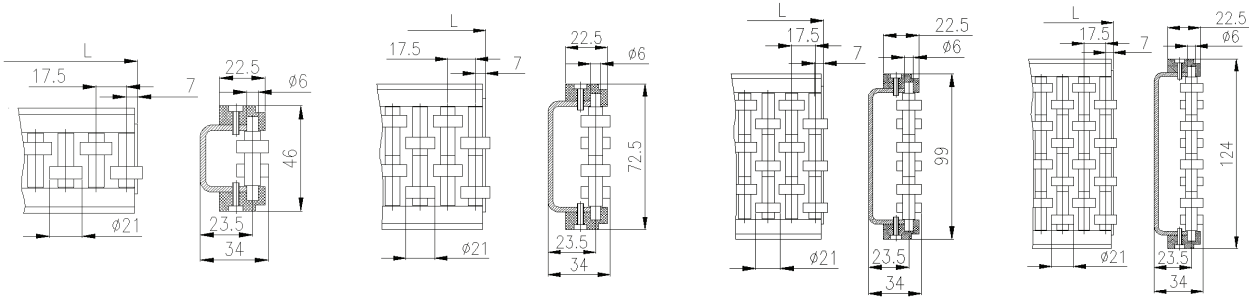


Code	Mat.	Color	A	B	Length
ZY-SG-020A	UHMW-PE+SS	GREEN	14	10	3mtr
ZY-SG-020B	UHMW-PE+SS	GREEN	16	12	3mtr

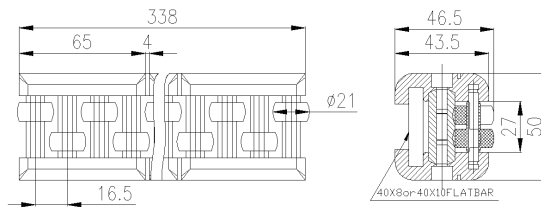


Code	Mat.	W	Color	Length
ZY-SG-021A	UHMW-PE+SS	25	WHITE	3mtr
ZY-SG-021B	UHMW-PE+SS	32	WHITE	3mtr
ZY-SG-021C	UHMW-PE+SS	41	WHITE	3mtr

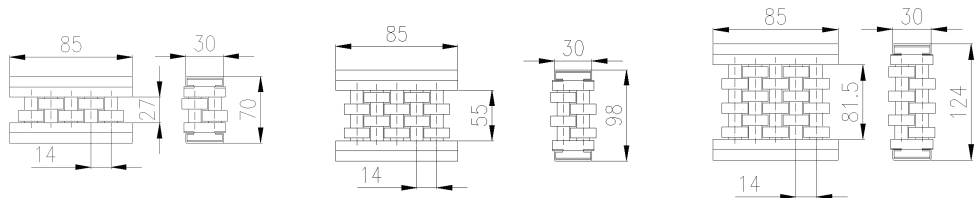
GROLLER PLATE SIDE GUIDES



Code	Name	Materials	Length
ZY-SG-010	Straight roller guards-Single	POM +SS pin	1 mtr/3mtr
ZY-SG-011	Straight roller guards-Double	POM +SS pin	1 mtr/3mtr
ZY-SG-012	Straight roller guards-Three	POM +SS pin	1 mtr/3mtr
ZY-SG-013	Straight roller guards-Four	POM +SS pin	1 mtr/3mtr



Code	Name	Materials	Length
ZY-SG-014	Flex roller guards-Single	POM +SS pin	1 mtr/3mtr



Code	Name	Materials	Length
ZY-SG-015	roller guards-Single	POM +SS pin	1 mtr/3mtr
ZY-SG-016	roller guards-Double	POM +SS pin	1 mtr/3mtr
ZY-SG-017	roller guards-Three	POM +SS pin	1 mtr/3mtr



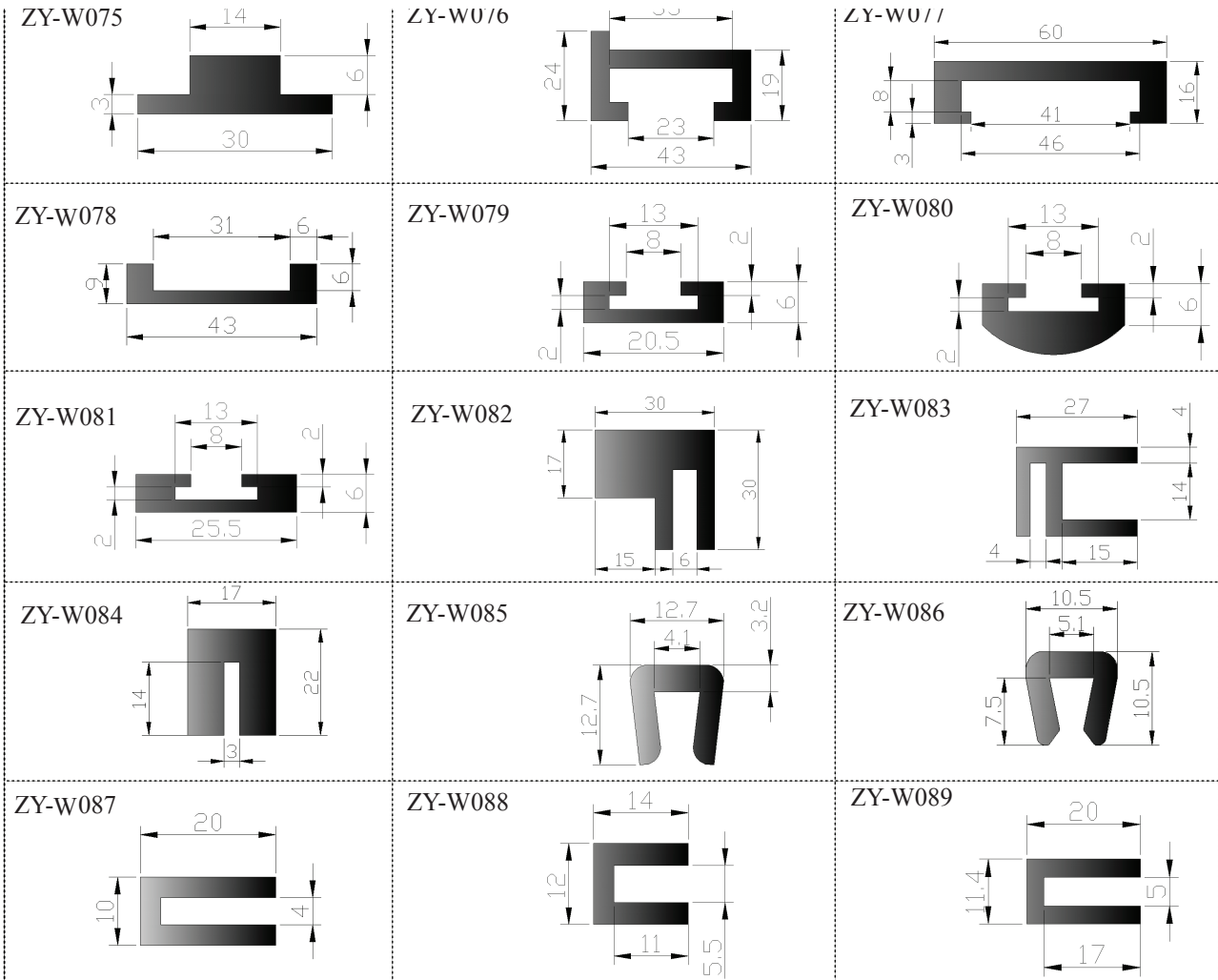
Code	W/mm	H/mm
ZY-W001	20	4
ZY-W002	25	6
ZY-W003	25	10
ZY-W004	30	3
ZY-W005	30	11.5
ZY-W006	30	15.5
ZY-W007	35	3
ZY-W008	35	6
ZY-W009	40	8
ZY-W010	40	10
ZY-W011	42	3
ZY-W012	42	6
ZY-W013	45	3.5
ZY-W014	50	3
ZY-W015	50	4
ZY-W016	50	5
ZY-W017	55	5
ZY-W018	55	6
ZY-W019	70	5
ZY-W020	80	6
ZY-W021	80	10
ZY-W022	90	6
ZY-W023	100	2
ZY-W024	100	5
ZY-W025	100	10
ZY-W026	140	4

Wearstrips:Mat.:UHMW-PE PACKING:30M/ROLL,50M/ROLL, OR 3M/LENGTH

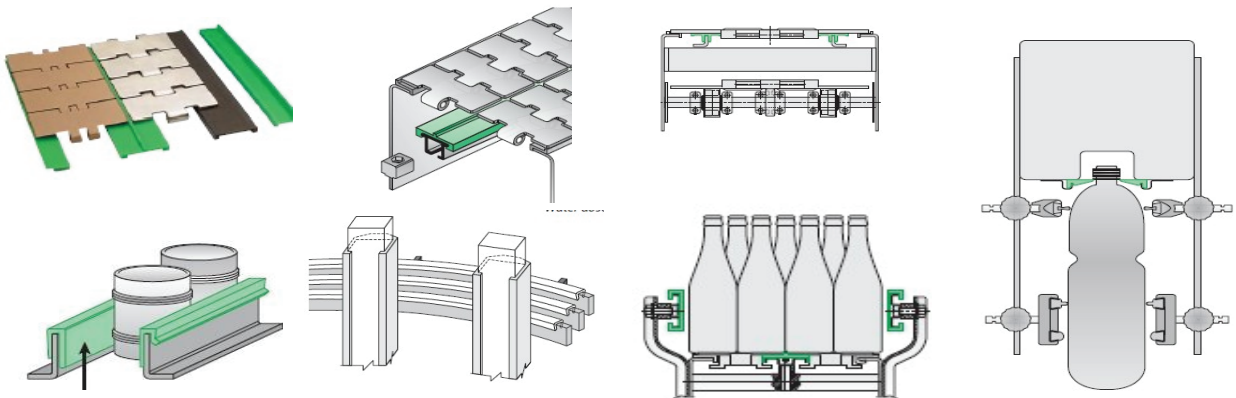
Color:white,green,black

<p>ZY-W027</p>	<p>ZY-W028</p>	<p>ZY-W029</p>
<p>ZY-W030</p>	<p>ZY-W031</p>	<p>ZY-W032</p>
<p>ZY-W033</p>	<p>ZY-W034</p>	<p>ZY-W035</p>
<p>ZY-W036</p>	<p>ZY-W037</p>	<p>ZY-W038</p>
<p>ZY-W039</p>	<p>ZY-W040</p>	<p>ZY-W041</p>
<p>ZY-W042</p>	<p>ZY-W043</p>	<p>ZY-W044</p>
<p>ZY-W045</p>	<p>ZY-W046</p>	<p>ZY-W047</p>
<p>ZY-W048</p>	<p>ZY-W049</p>	<p>ZY-W050</p>

<p>ZY-W051</p>	<p>ZY-W052</p>	<p>ZY-W053</p>
<p>ZY-W054</p>	<p>ZY-W055</p>	<p>ZY-W056</p> <p>D=8/10/12mm</p>
<p>ZY-W057</p>	<p>ZY-W058</p>	<p>ZY-W059</p>
<p>ZY-W060</p>	<p>ZY-W061</p>	<p>ZY-W062</p>
<p>ZY-W063</p>	<p>ZY-W064</p>	<p>ZY-W065</p>
<p>ZY-W066</p>	<p>ZY-W067</p>	<p>ZY-W068</p>
<p>ZY-W069</p>	<p>ZY-W070</p>	<p>ZY-W071</p>
<p>ZY-W072</p>	<p>ZY-W073</p>	<p>ZY-W074</p>



Wearstrip applications



MATERIAL INDEX

•Metal for steel chains , and base roller chains

	Austenitic stainless steel SS304	Ferritic stainless steel SS430	Carbon steel CS
Recommended temperature area	-70 to +430 C -94 to +806 F	-70 to +430 C -94 to +806 F	-30 to +425 C -86 to +797 F
Magnetic properties	Non-magnetic	Magnetic	Magnetic
Chain supplied in the material	SS812 SS802 SS881/SS881 TAB	SS812 SS802 SS881/SS881 TAB SS881M Magnet type	base roller chains for 843/1873/3873

•Thermoplastic for modular belts,plastic chains, and plastic spare parts of conveyor components

Material	Temperature range		FDA
	°C	°F	
POM - Polyoxymethylen	-40 to +90	-40 to +194	✓
PA6 - Polyamide	-40 to +120	-40 to +248	✓
PA6-GF - Polyamide Glass Reinforced	-40 to +120	-40 to +248	-
PA6.6 - Polyamide	-40 to +140	-40 to +284	✓
PP - Polypropylene	+1 to +104	+34 to +219	✓
PE - Polyethylene	-50 to +80	-58 to +176	

POM - Polyoxymethylen

POM polymers with self-lubricating additives to obtain the lowest possible friction resistance.

PP - Polypropylene

Polypropylene is a thermoplastic material with very good chemical resistance properties. PP is an economical material for applications with high temperatures.

PA6 - Polyamide

Polyamide PA6 is a thermoplastic material. The combination of mechanical properties and chemical resistance makes this material suitable for many situations. Polyamide has a high resistance to wear and dynamic loads. This material is primarily used for sprockets.

PE - Polyethylene

PE is used in low temperature applications and where high impact resistance is required.



工厂地址：
江苏省昆山市千灯镇卫泾路428号
电话：0512-57567400-801
传真：0512-57568400